



# GAT MONTHLY MEMBERSHIP PROGRESS REPORT

Results as of: 9/30/2021

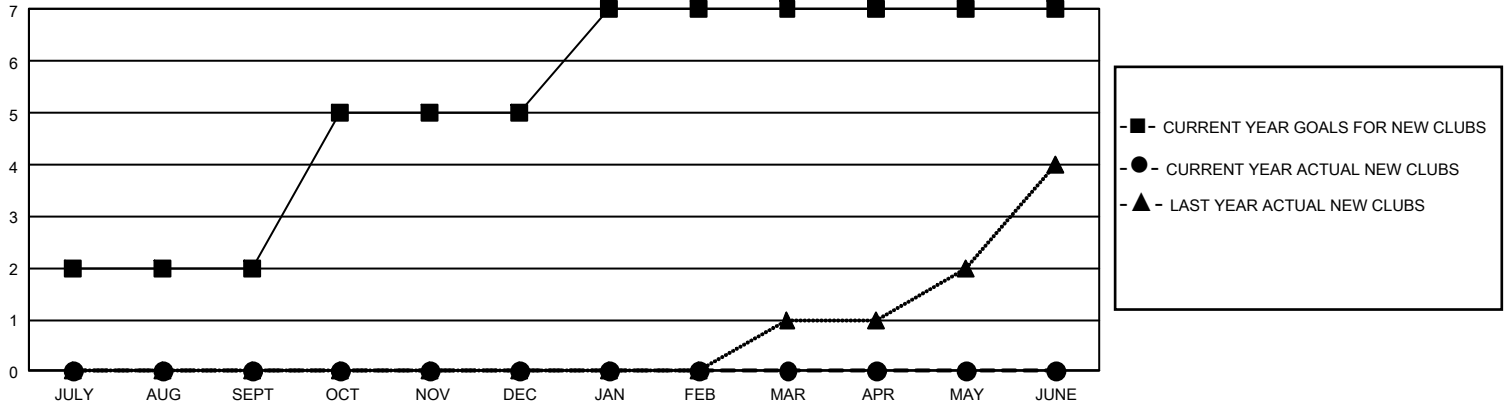
## GMT Constitutional Area 2, Group C

REPORT DOES NOT INCLUDE CLUBS IN UNDISTRICTED AREAS.

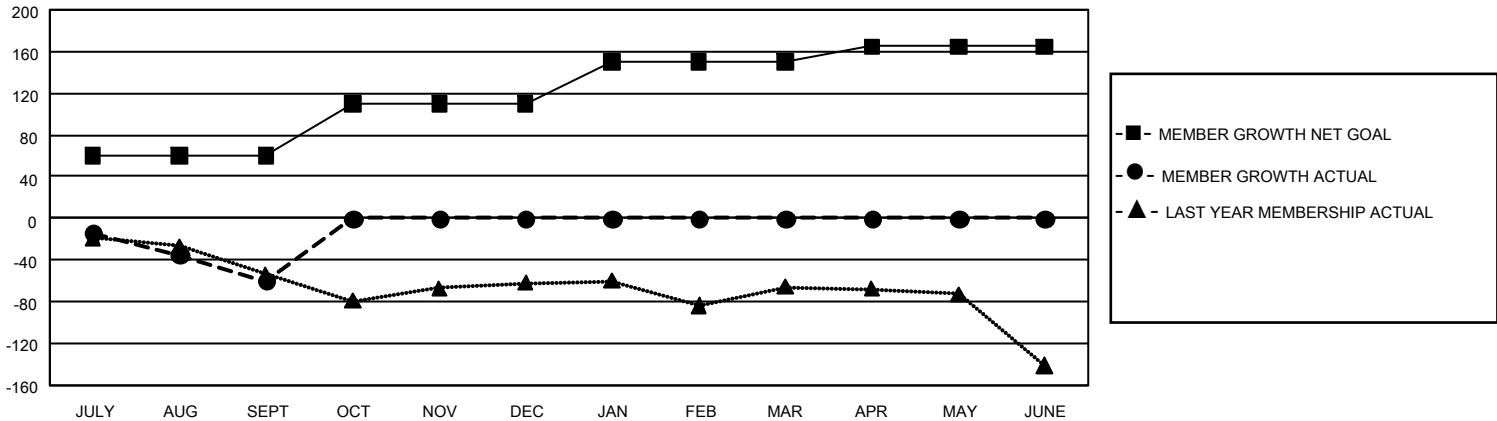
Clubs			
RESULTS FOR 2021-2022			
QUARTER	NEW CLUB GOAL	NEW CLUBS	DROPPED CLUBS
JULY/AUG/SEPT	6	0	1
OCT/NOV/DEC	9	0	0
JAN/FEB/MAR	6	0	0
APR/MAY/JUNE	0	0	0

Members			
RESULTS FOR 2021-2022			
QUARTER	MEMBER GROWTH NET GOAL	MEMBER GROWTH ACTUAL	DROPPED MEMBERS ACTUAL (including transfers)
JULY/AUG/SEPT	60	27	81
OCT/NOV/DEC	50	0	0
JAN/FEB/MAR	40	0	0
APR/MAY/JUNE	15	0	0

GOALS AND ACTUAL NEW CLUBS CUMULATIVE



GOALS AND ACTUAL MEMBERS CUMULATIVE



DROPPED CLUBS: 1	16 CLUBS OF 165 ADDED 1 OR MORE NEW MEMBERS	<u>GENDER DISTRIBUTION</u>	
<u>DROPPED MEMBERS</u>		MALE	2,359 (65.40%)
DECEASED	5	FEMALE	1,248 (34.60%)
CLUB CANCELLED	0	NON BINARY	0 (0.00%)
OTHER	76	PREFER NOT TO ANSWER	0 (0.00%)
TOTAL	81	TOTAL FAMILY UNIT MEMBERS	663
	<a href="#">CLICK HERE FOR CUMULATIVE MEMBERSHIP DATA</a>	FAMILY MEMBERS PAYING HALF DUES	339